

Features

- This valve has two input inlets(E1,E2) and can be controlled in different position.
- First activated position can get through to output signal(A).

Specification

Model	MVAS	
Bore No.	6A	8A
Port size	Rc1/8	Rc1//4
Medium	Air	
Operating pressure range	0.1~1 MPa	
Proof pressure	1.5 MPa	
Effective orifice	11.5 mm ²	30.5 mm ²
Ambient temperature	-15~+60°C (No freezing)	
Weight	43 g	119 g

Order example

MVAS — 6A — G

MODEL

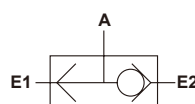
PORT SIZE

PORT THREAD

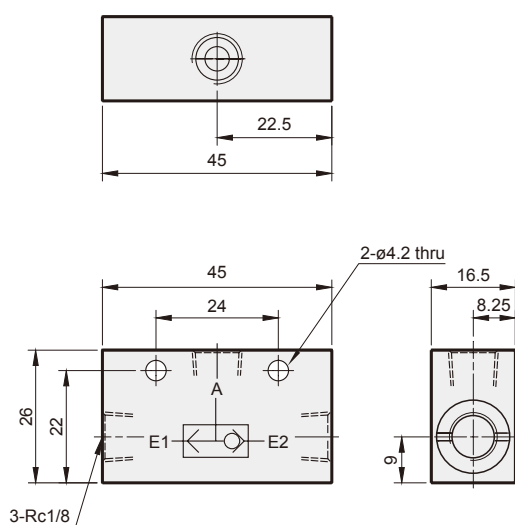
6A: Rc1/8
8A: Rc1/4

Blank: Rc thread
G: G thread
NPT: NPT thread

Symbol



MVAS-6A



MVAS-8A

