

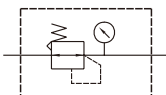
MAR302 series

AIR UNIT (R.UNIT)

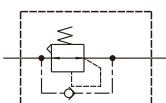


Option: MP41

Symbol



Standard



Backflow

Specification

Model	MAR302		
Bore No.	8A	10A	15A
Port size	1/4	3/8	1/2
Medium	Air		
Max. operating pressure	1 MPa		
Proof pressure	1.5 MPa		
Regulated pressure range	0.05~0.85 MPa		
Ambient temperature	-5~+60°C (No freezing)		
Attachment	Pressure gauge (PG-20), Bracket		
Weight	270 g		

Order example

MAR302 K – 8A – □ – E1 – □

MODEL

BORE SIZE

PRESSURE SWITCH

PORT THREAD

Blank: Standard

K: Backflow function

8A: 1/4

10A: 3/8

15A: 1/2

E1: MP41P-02

E2: MP41P-02-QD

E3: MP41P-02-J

E4: MP41P-02-QD-J

E5: MP41P-04

E6: MP41P-04-QD

E7: MP41P-04-J

E8: MP41P-04-QD-J

Blank: Standard type

C: External pressure gauge (PG-40)

Blank: Rc thread

G: G thread

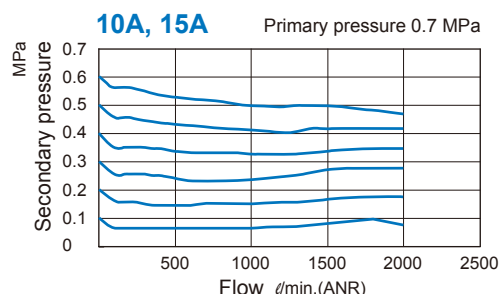
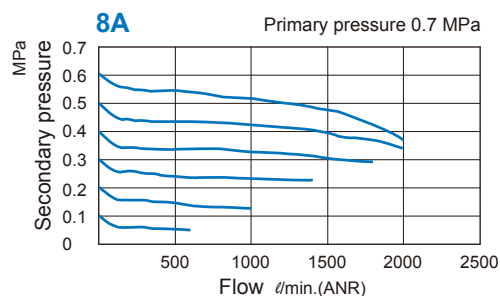
NPT: NPT thread

* The backflow module can not be exchange with gauge. When choosing the flow direction is left to right, the knob is up.

* PG-40 and MP41 can not be selected at the same time.

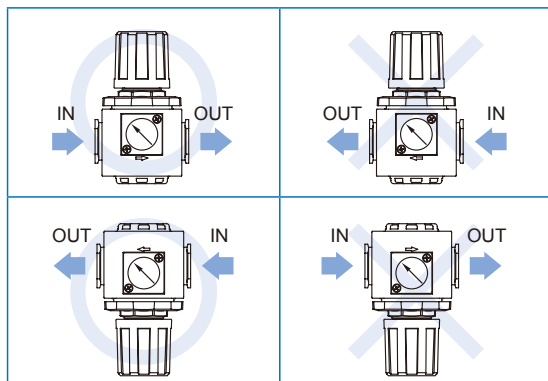
* Refer to page 5-11 for the option of digital pressure switch MP41.

Flow feature

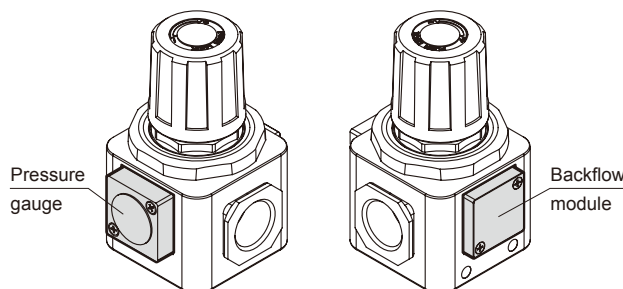


Precautions

When choosing the flow direction, the backflow module can not be exchange with gauge. If you have special order request, please contact the business.



Instructions



* When the air supply is cut off, the inlet pressure less than outlet pressure, the residual pressure return to the inlet side.

* Please set the inlet pressure to at least 0.05MPa higher than the set pressure.

MAR302 Dimensions

AIR UNIT (R.UNIT)

